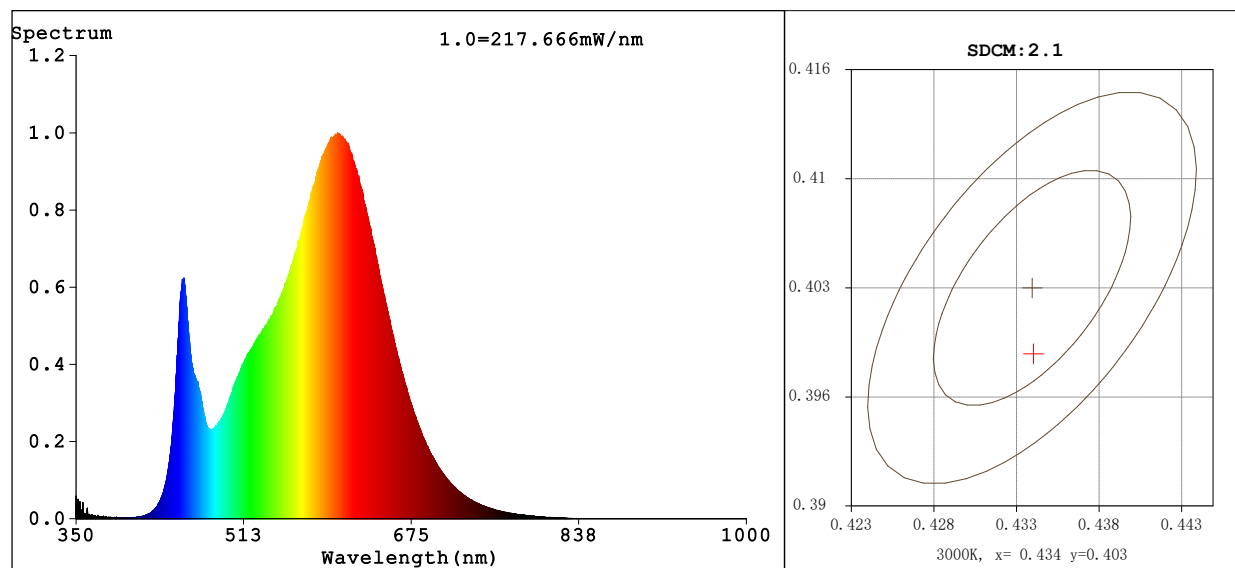


**Spectrum Test Report****Color Parameters:**

Chromaticity Coordinate:  $x=0.4339$   $y=0.3990$   $u'=0.2508$   $v'=0.5189$   
CCT=3010K (Duv=-0.0016) Dominant WL:Ld =583.4nm WL:Lc = --nm Purity=50.0%  
Ratio:R=23.1% G=74.0% B=2.9% Peak WL:Lp=603.6nm FWHM=122.2nm  
Render Index:Ra=82.8 AvgR=77.6 TM30:Rf=84 Rg=95

R1 =82 R2 =93 R3 =94 R4 =80 R5 =82 R6 =92 R7 =81  
R8 =58 R9 =8 R10=85 R11=79 R12=73 R13=85 R14=97 R15=75

**Photo Parameters:**

Flux = 10475 lm Eff. : 132.75 lm/W Fe = 32.16 W

**Electrical parameters:**

V = 230.57 V I = 0.3464 A P = 78.91 W PF = 0.9879

LEVEL:OUT WHITE:ANSI\_3000K

Status: Integral T = 28 ms Ip = 43568 (66%)

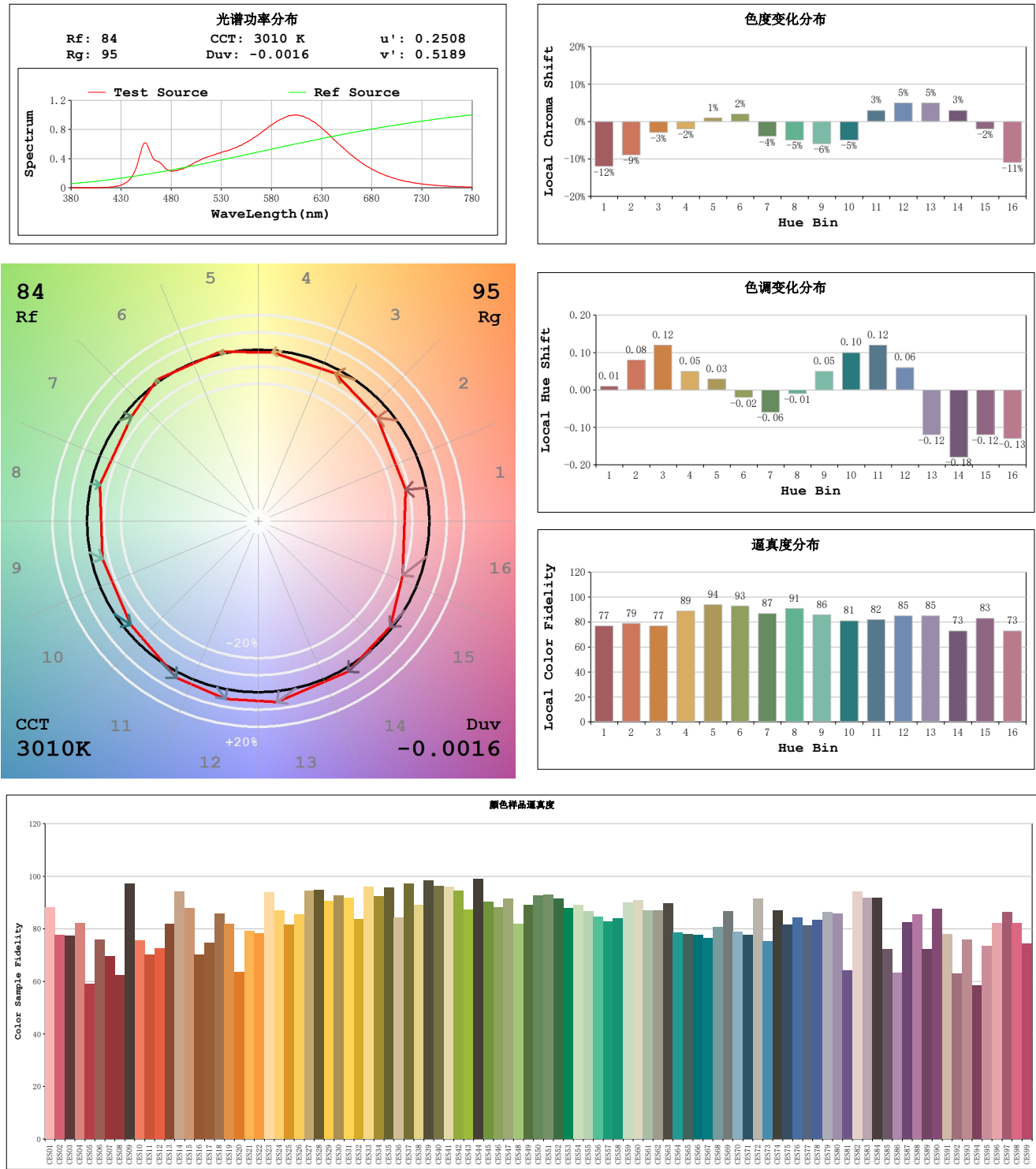
**GBT5702**

Model:  
Tester:  
Temperature:25.3Deg  
Manufacturer:

Number:127  
Date:2025-09-28 18:56:14  
Humidity:65.0%  
Remarks:

TM30

视角:2 度



Model:  
Tester:  
Temperature:25.3Deg  
Manufacturer:

Number:127  
Date:2025-09-28 18:56:14  
Humidity:65.0%  
Remarks: